



ALEAP GREEN INDUSTRIAL PARKS

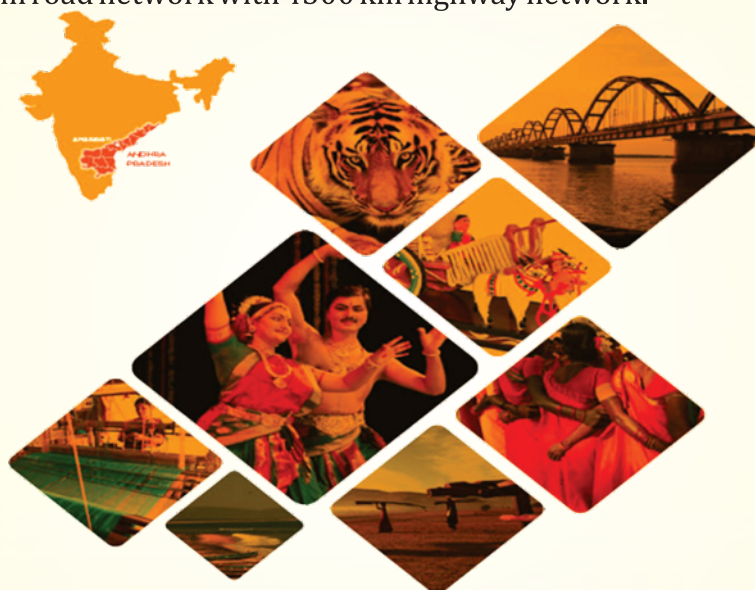
**Planning an industrial unit
Concentrate on your
Business Plan.
Leave the rest to us.**



Association of Lady Entrepreneurs of India

About Andhra Pradesh:

Andhra Pradesh) is one of the 29 states of India, situated on the southeastern coast of the country. The state is the eighth-largest state in India covering an area of 162,970 km² (62,920 sq mi). As per 2011 Census of India, the state is tenth-largest by population with 49,386,799 inhabitants. It is Located West to Karnataka, North to Telangana , East to Odisha, and South to Tamilnadu. In Andhra Pradesh Largest city is Vishakapatnam and Vijayawada.The state has a coastline of 974 km (605 mi) with jurisdiction over nearly 15,000 km² territorial waters, the second longest coastline among the states of India after Gujarat .The state has 7040 Rail network and 46,000 km road network with 4300 km highway network.



State GDP (2015-16)	USD 100 billion
Capital City	Amaravati
Largest City	Visakhapatnam
Cities with more than 1 million population	27
Coastline	974 km (2nd longest among Indian States)
Area	1,60,205 sq.km
Geography	Varied topography, ranging from the hills of Eastern Ghats and Nallamallas, to the shores of Bay of Bengal

Key Economic Sectors	Pharmaceuticals, Textiles, Agro & Food Processing, Automobile Components, Mineral-based Industry
Major Industrial Hub	Visakhapatnam Industrial Hub Tricity (Tirupati-Nellore-Chennai) Hindupur
Upcoming Industrial Corridors	Visakhapatnam-Chennai Chennai-Bengaluru Bengaluru-Kurnool
National Investment and Manufacturing Zones (NIMZ)	Pamuru NIMZ, Chittoor/Anantapur NIMZ

ALEAP Green Industrial Parks

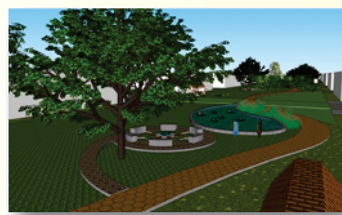
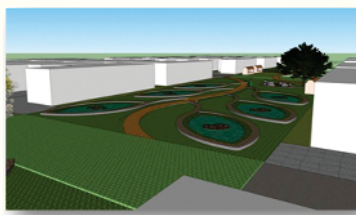
The Association of Lady Entrepreneurs of Andhra Pradesh (ALEAP), which is spearheading promotion of women entrepreneurship, is planning a new industrial park at BVPalem, SPSR Nellore District, Balabadrapuram, East Godavari District and Gidijala in Visakhapatnam tp cater to women entrepreneurs. With the technical inputs from GIZ, GmbH the Master Plan preparation for the new industrial parks has started. The Green Industrial Parks, is envisioned to be a model Sustainable Industrial Park that provides conducive environment for women entrepreneurs and employs state-of-the technologies, including clean technologies, renewable energy technologies, environmental technologies and cost-effective common infrastructure.

Salient features of Women -Green Industrial Park

- Environment Friendly site master plan; Efficient circulation system
- Green Rating for the Green Industrial Park.
- Green Buildings for factory sheds; efficient industrial plot layout and building layout; environment friendly bldg. Materials; Standard fencing design; Signage;
- Green Energy master planning; PV roof tops; Solar street lamps; Solar power plant
- Pollution under control: Waste water treatment, recycle/reuse; Waste treatment, reuse; Rainwater harvesting
- Green Spines; Ecological landscaping; Organic farms



- Women friendly: Unique services for women employees (e.g., crèche, toilets, rest rooms for extended work, first aid, catering/canteens (centralised), kiosks, common toilets, internal shuttle service (battery operated), external connection to public transport, water dispensers, guest house, ladies room
- Safety & Security measures like secured fencing, access control, CC cameras, fire alarms & fighting systems etc.
- Cost Effective Common Services, e.g. Common Effluent Treatment Plant/ Sewage Treatment Plant ,Vermicompost Plant (for organic waste), Handmade Paper Unit (for paper waste), Incubator facilities etc.
- Micro entrepreneurship for common services, e.g., Business Centres, Warehousing, Manning access control entry/exit, Canteens/Caferia, Outdoor functions / events, Battery operated vehicles for internal transport etc.
- Micro entrepreneurship in the Green Spine are: Cafeteria, STD Telephone Booth, Horticulture/Floriculture, Space for outdoor events etc.



S.No.	Parameter	Provision
1.	Road network	<p>Hierarchy of roads proposed-</p> <ul style="list-style-type: none"> - Level 1: 18 m R-O-W (2+2 lanes, median, sidewalk, cycle track, avenue plantation and underground utilities) - Level 2: 12 m R-O-W (1+1 lanes, sidewalk and underground utilities)
2.	Entry Exit Provisions	<p>Main entry gate A-GRIP proposed with signature architecture to reflect the unique identity of the Green Industrial Park</p> <p>Additional facilities-</p> <ul style="list-style-type: none"> - Security centre - Map of A-GRIP - Bus parking for external transport - Bus parking for internal transport - Truck/ car parking facilities - Space in front of gate for landscaping - An information centre - Public toilets - A drinking water facility

S.No.	Parameter	Provision
3.	Mobility - Eco Efficient Transportation	<p>Provisions for external linkages -</p> <ul style="list-style-type: none"> - Bus stop and pedestrian access points near the main entrance of the park - Recommendations for strengthening the surrounding bicycle and pedestrian network - Eco-friendly public transportation such as battery operated /CNG vehicles from A-GRIP to the nearby settlements, railway station, bus station, etc. <p>Provisions for internal mobility-</p> <ul style="list-style-type: none"> - Battery operated / CNG vehicles for internal transport - Provisions for bus stops/shelters throughout the park - Dedicated bicycle tracks and pedestrian paths along the roads - Adequate parking facilities for all vehicles at the entry/exit points and within the industrial zones
4.	Bicycles Ways	Provisions for bicycle tracks and parking facilities to encourage bicycling to work
5.	Pedestrian Network	Extensive pedestrian network consisting of sidewalks along roads and pathways in the green corridors proposed to create a network of safe and convenient pedestrian movement
6.	Parking	<p>Parking proposed at: park level (overnight stay), zone/cluster level (temporary stay), and plot level (loading/unloading)</p> <p>Parking provisions include:</p> <ul style="list-style-type: none"> - Centralized truck parking - Zone level parking facilities for buses, four wheelers, three wheelers and non-motorized vehicles
7.	Automobile Service Station	A service station proposed for maintenance of commercial vehicles
8.	Weigh Stations	A weigh station proposed as part of logistic infrastructure
9.	Signage	<p>Recommended system of signages-</p> <ul style="list-style-type: none"> - Directional signage along major roads, pedestrian ways and bicycle ways - Signage on landmarks, central facilities, zonal facilities etc. - Uniform signages pertaining to names of industries - Information signages - Advertisement boards/hoardings
10.	Security	<p>Proposed security measures-</p> <ul style="list-style-type: none"> - Centralized security operations communications center at the main entrance - Close circuit (CCTV) cameras at strategic locations in the industrial park - Emergency blue light phones along the roads

S.No.	Parameter	Provision
11.	Fencing	Elegantly designed fencing all around the industrial park built with environment-friendly materials
12.	Fire and Disaster Management	Proposed fire safety measures at the industrial park level- <ul style="list-style-type: none"> - Provision for a fire station - Disaster management centre at the first floor of the fire station to manage the park in case of emergency/ disasters
13.	Utilities	Provisions for utilities in A-GRIP- <ul style="list-style-type: none"> - Power transmission lines and a sub-station - Water conveyance, treatment, adequate storage and distribution within the park - Telephone lines

Technical Infrastructure Provided

S.No.	Parameter	
1.	Warehouses/Raw Material Depots	A warehouse proposed (Site area = 2500 m2)
2.	Business centre (One stop service centre)	A Business centre with various related functions like restaurant, bank, post office and courier services (Site area = 850m2 -Ground + 1 floors)
3.	Facility complex	A facility complex proposed with facilities like information centre, marketing, exhibition, research and development, auditorium, training centre, incubators for entrepreneurship promotion etc. (Site area = 3440 m2 -Ground + 2 floors)
4.	Administrative Building	Provision for an administrative unit office within the facility complex for management A-GRIP
5.	Green Factory Buildings	Recommendations given for industries to follow IGBC norms Climate responsive design of buildings recommended
6.	Renewable Energy/ Energy Efficiency Provisions	Proposed energy efficiency measures – <ul style="list-style-type: none"> - All buildings recommended to follow the Energy Conservation Building Code. (Process loads for industrial buildings excluded) - All industrial buildings with roof top photo voltaic panel installations - 100% of internal and external lighting fixtures to be BEE star rated, wherever applicable - Use of 'LED' in all common spaces whereas use of incandescent lamps not allowed - Installation of shielded lights to save energy and night sky pollution - Use of solar energy for cooking purposes at central canteen
7.	Maintenance centre	A maintenance centre proposed for maintaining the upkeep of vehicles (Site area = 100 m2)
8.	Utilities	Proposed utilities – <ul style="list-style-type: none"> - Underground utility lines - Electricity sub-station (Site area = 2500 m2)

ENVIRONMENTAL INFRASTRUCTURE PROVIDED

1. Storm Water Management

- » Layout design as per topography so that the storm water drains follow the natural drainage system
- » Decentralized storm water management system proposed for cost effectiveness
- » Collection and treatment of run-off of first rains at 1 hour peak rainfall to avoid any contamination risks
- » Pooling of water and integration into green landscapes
- » Recycle/reuse provisions for industrial, horticulture etc.

2. Wastewater Management

- » Provisions for wastewater conveyance system in accordance with slopes and zoning of industries
- » Provisions for Decentralized waste water treatment system (Site area = 5000 m²)

3. Solid Waste Management

- » Provisions for collection, transportation, storage, and disposal of wastes
- » Elegantly designed dustbins in public places
- » Recycling centre for e-waste, vermi-

compost plant, and handmade paper plant etc. (Site area = 300 m²)

4. Green/Open Spaces/Landscapes

- » Central green spine designed as a lung space of the industrial park
- » Green belts at the periphery to act as a buffer for the surroundings
- » Vertical and horizontal stretches of greens spreading across A-GRIP in the form of avenue plantations and green pathways
- » Greens at the plot level

5. Resource Efficiency

- » Provisions for rainwater harvesting
- » Provisions for recycle/reuse of treated wastewater
- » Provisions of renewable energy
- » Recommendations for green factory buildings and climate responsive building design

6. Environmental monitoring

- » 20 environment monitoring stations
- » Data display inside the industrial park as well as at the entry/exit points
- » Data display via internet

SOCIAL INFRASTRUCTURE PROVIDED

1. Food and beverages

- » Canteen (3750 m², Ground floor+ 2)
- » 14 Kiosks, tea/coffee shops (13.5 m² each)
- » Restaurant within business centre

2. Education and training

- » Training centre within facility complex

3. Entrepreneurship development

- » Incubators within facility complex
- » Accommodation/dormitory

4. Recreational facilities

- » 3 outdoor courts for basketball and outdoor tennis
- » Landmark and its precincts
- » Green/landscaped areas

5. Guest House

- » Guest House for visitors and service engineers etc. (1,850 m², Ground floor+1)

6. Special arrangements for truck drivers

- » Dormitories for overnight stay

7. Transportation/mobility arrangements

- » Parking facilities for vehicles
- » Eco-friendly internal public transport
- » External transport to bus terminus, railway station, etc.
- » Bicycle tracks and parking areas

- » Pedestrian pathways along roads, green pathways through plotted area

8. Safety & security

- » Fire station (Site area= 400 m²)
- » Provisions for CCTV cameras
- » Fencing along the boundary
- » Security office and security cabins
- » Emergency blue phones along roads
- » Well- lit public spaces, roads, emergency access / exits and rear / side boundaries of the industrial plots

9. Gender aspects: provisions for women employees

- » Crèche for children of the employees
- » Guest house accommodation
- » Provisions for strengthening of safety and security
- » Provisions for internal and external transportation
- » Provisions for health centre, canteens/ food outlets, kiosks, toilets, battery operated shuttle service

10. Other provisions

- » A health centre within facility complex
- » Super market and ATM (Site area= 200 m²)
- » 7 Public toilets (15 m² each)
- » Water dispensers at public places

ALEAP Green Industrial park at BV Palem, SPSR District :

About the site : Location, accessibility and site surroundings:

AGIP is located in BV Palem Industrial Park, in SPSR Nellore District of Andhra Pradesh. WGIP extends over 48 acres of land area in MSME Industrial park of PAIC.

This site is located on Chennai – Kolkata National high way. The Nellore railway station is 18kms from this site. Nearest Airport is 124kms from this site at Renigunta. The site is strategically very idle location for Micro and Small Industries. This site is surrounded by 20 villages and there is no dearth of man power

Proposed Industries in this Green Industrial Park

- Food Processing
- Garments
- Herbal products
- Packaging and allied units
- Jute Bags
- Paper Bags
- Engineering

ALEAP Green Industrial Park at Balabadrapuram

Location, accessibility and site surroundings:

AGIP is located in Balabadrapuram village, in East Godavari District of Andhra Pradesh. WGIP extends over 34.19 acres of land area outside the settlement area of Balabadrapuram.

This site is located on Rajahmundry - Samarlakota high way. The Balabadrapuram railway station is 2kms from this site. Nearest Airport Madhurapudi is 32kms from this site at Raiahmundry. The site is strategically very idle location for Micro and Small Industries. This site is surrounded by 15 villages and there is no dearth of man power

Proposed Industries in this Green Industrial estate :

- Coir products
- Coconut based products
- Herbals
- Hosiery Garments
- Agri Processing
- Warehousing

Green Industrial park at Gidijala, Visakhapatnam

About the site : Location, accessibility and site surroundings:

The proposed site for establishment of W-GIP thrust in Hosiery Garments, Food processing is located in Gidijalavillage, in Visakhapatnam District of Andhra Pradesh. WGIP extends over 50 acres of land area outside the settlement area of Gidijala. It is situated 12km away from sub-district headquarter Anandapuram and 34km away from district headquarter Visakhapatnam. Nearest Airport is 40 kms from this site at Visakhapatnam. The site is strategically very idle location for Micro and Small Industries. This site is surrounded by 15 villages and there is no dearth of man power

Proposed Industries in this Green Industrial estate :

- Herbals Products
- Garments
- Agri&Food Processing
- Paper and packaging
- Warehousing
- Engineering
- Pharma Formulations
- Analytical Labs

ASSOCIATION OF LADY ENTREPRENEURS OF INDIA

Nellore Office Address: H.No:16-10-123, 3rd floor, Opp:TDP Office, Nellore-524003

Contact Number: 9515462753, 8978988005

Head office Address: D.No:8-3-677/6, Plot No-6, Sri Krishna Devaraya Nagar,
Near Ganapathi Complex, Yellareddyguda, Hyderabad-500073

Telephone : 040-23735439, Tele/Fax: 040-23732733

Email-aleap93@gmail.com, aleapreddifmail.com, Website:www.aleap.org

Vijayawada Address D.No:30-14-1, Sri Aparna Clinic Upstairs, Durgaagraharam,
Near Kothavanthena, Vijayawada-2

Contact Number: 8978988008, 8978988002